

MAP

PERMANENT EXHIBITIONS

3D Theater

Discover the *T. rex* named SUE like you never have before. Dare to come face-to-face with this roaring, earthshaking, and breathtaking predator. Don't miss the digital state of the art 3D theater for an experience that is larger than life.

Specially Ticketed Film **G**



Crown Family PlayLab

Little explorers have their own place in a big museum! Your little explorer can dig up dinosaur bones, grind corn in a pueblo, make music with instruments from around the world, or put on an animal costume and crawl, hop, or fly! **G**

Hours are 10am to 3pm.
Closed Tuesday and Wednesday.
Ages 6 and under.

Pre-registration needed for groups

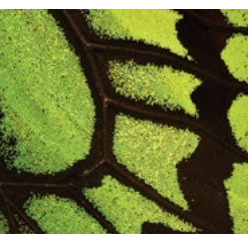
The Crown Family PlayLab is generously sponsored by the Crown family.



Abbott Hall of Conservation Restoring Earth

Discover how The Field Museum is leading the way in conservation by putting science into action. **U**

Lead Sponsor: **Abbott**



Underground Adventure

See what life is like through the eyes of a bug. Explore an underground world where everything is 100 times its normal size and discover the diverse web of life that lives beneath your feet. **G**

Specially Ticketed Exhibition



Grainger Hall of Gems

Marvel in the beauty and splendor of over 700 gemstones and discover how they have captured our fascination for thousands of years. Unusual natural formations, dazzling cut gemstones and one-of-a-kind jewelry. **U**

The Grainger Hall of Gems is generously sponsored by The Grainger Foundation.



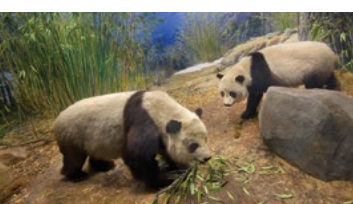
Inside Ancient Egypt

Unlock the secrets of Egypt by descending into an ancient tomb, discovering over 20 mummies, and more! **M G**



Africa

Discover dynamic cultures and explore the rich environments of the vast African continent. **M**



Mammals of Asia

See giant pandas, Bengal tigers, leopards, and more amazing mammals from Asia in world-class natural habitat dioramas. **M**



Regenstein Halls of the Pacific

Explore the cultures and natural history of the Pacific Islands. **U**

U Upper Level **M** Main Level **G** Ground Level

Griffin Halls of Evolving Planet

If you are looking for dinosaurs, this is the place to be! Take an awe-inspiring journey through 4 billion years of life on Earth, from single-celled organisms to towering dinosaurs and our extended human family. **U**

The Griffin Hall of Evolving Planet is made possible by the generous support of the Kenneth C. Griffin Charitable Fund. The Elizabeth Morse Genius Charitable Trust is the generous sponsor of Evolving Planet's Genius Hall of Dinosaurs.

McCormick Foundation Halls of The Ancient Americas

Take a journey through 13,000 years of human ingenuity and achievement. Experience the world of Ice-Age mammoth hunters...see how families lived in the first settled villages...explore the awe-inspiring empires of the Incas and Aztecs, and the richness of ancient life in Chicago's own back yard. **M**



Lions of Tsavo

Stand toe-to-paw with these infamous East African lions. **M**



Aldorf Hall of Northwest Coast and Arctic Peoples

Compare life in the Arctic along with a temperate coast, and see how these environments led to two unique cultures. **M**

Cyrus Tang Hall of China

Through textiles, rubbings, bronzes, ceramics, and sculpture, travel across thousands of years of history of one of the world's most influential civilizations. Experience the *Cyrus Tang Hall of China* online in Chinese at chinahall.fm **U**

请访问“唐仲英中国馆”中文网站 chinahall.fm, 在线体验本馆展览。

Specially Ticketed Exhibition



Malott Hall of Jades

This stunning display of objects from the Museum's collection takes you through China's 2,000-year history. **U**

EXPLORE FIELD MUSEUM SCIENCE LABS!



Regenstein Artifact Conservation Lab

Get a behind-the-scenes look at artifact conservation from Museum experts as they study, prepare, and conserve rare artifacts from our extensive anthropology collection. **U** West Upper Level

McDonald's Fossil Preparation Laboratory

Watch our preparators ready newly excavated fossils for study. **U** East Mezzanine

Daniel F. and Ada L. Rice DNA Discovery Center

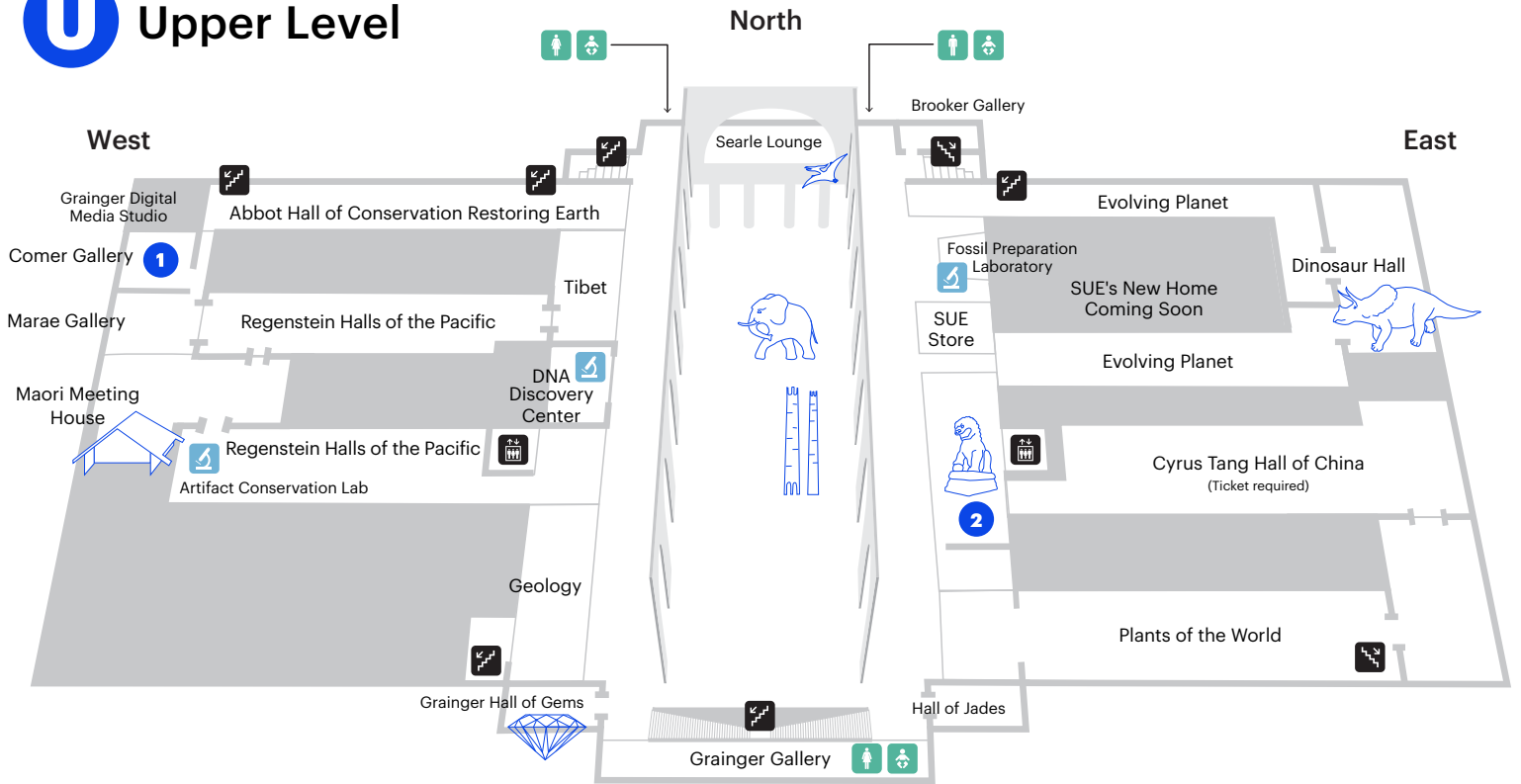
Witness groundbreaking genetic research in The Field's Pritzker Laboratory. Watch scientists, dedicated to the preservation of the world's biodiversity, study and analyze DNA specimens. **U** West Mezzanine

Grainger Science Hub

Bringing our collections out from behind closed doors in a dynamic new space. **M** Southeast Main Hall

All labs are free with general admission.

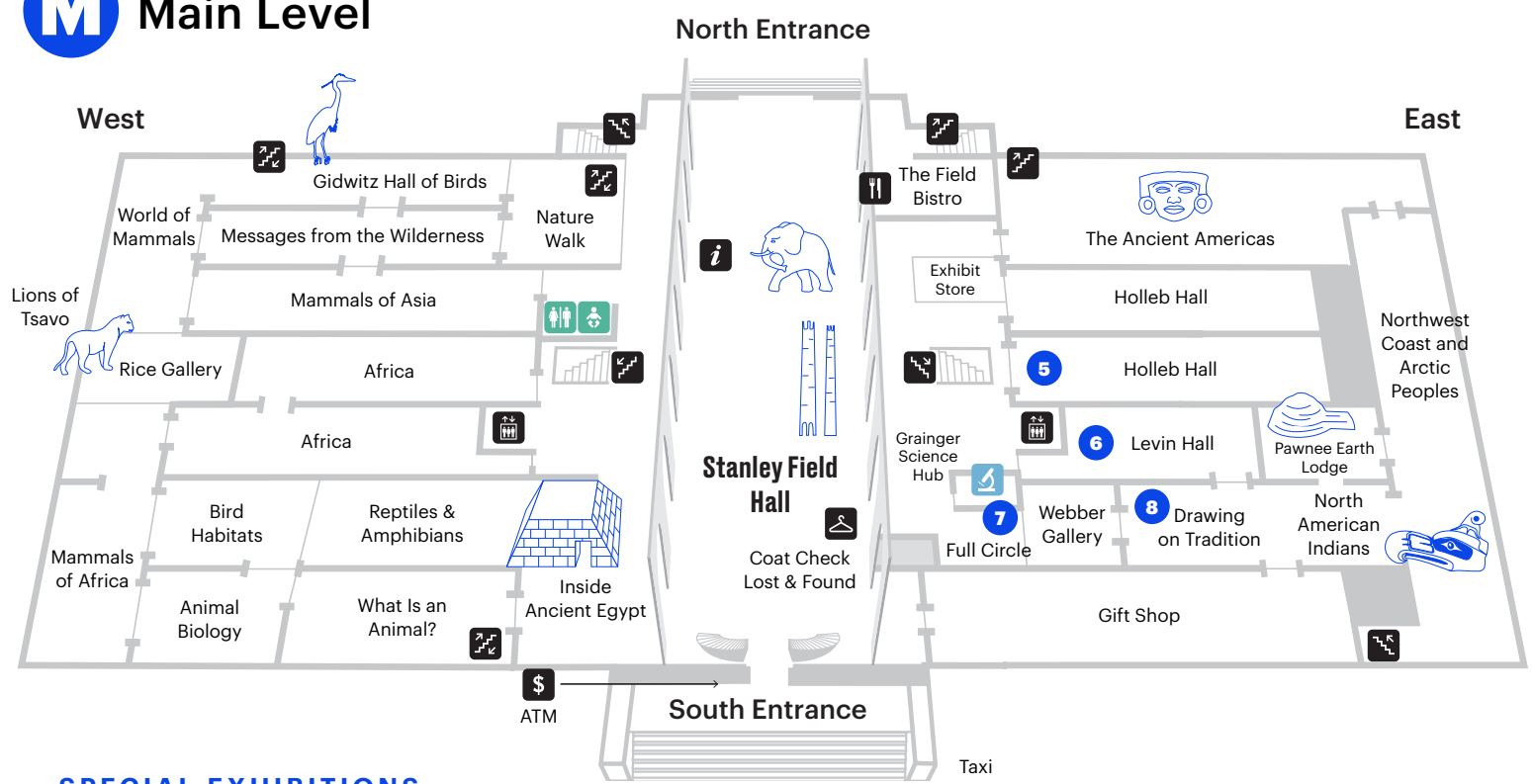
U Upper Level



SPECIAL EXHIBITIONS

- 1** Looking at Ourselves: Rethinking the Sculptures of Malvina Hoffman
- 2** City Windows: The Chicago/Beijing Panoramic Paper Cuts of Professor Qiao Xiaoguang

M Main Level



SPECIAL EXHIBITIONS

- 5** Mummies (Ticket required)
- 6** Antarctic Dinosaurs (Ticket required)
- 7** Full Circle/Omani Wakan: Lakota Artist Rhonda Holy Bear
- 8** Drawing on Tradition: Kanza Artist Chris Pappan

G Ground Level



- | | | | | | |
|------------|--------------------|----------------|----------------------|------------|---------------|
| First Aid | Information | Stairs | Eating Area, Vending | Restaurant | Accessible |
| Laboratory | Accessible Toilets | Baby Care Area | Elevator | Strollers | Bus / Shuttle |

Become a member today and SAVE

When you join today, you save the price of your paid general admission off membership. Just bring your receipt to the Membership Desk before you leave today to sign up and save.



In addition to **FREE** general admission all year, as a member you enjoy a limited number of **FREE** or discounted tickets for special exhibitions, **DISCOUNTS** at the Museum's restaurants and **DISCOUNTS** on education programs. **JOIN TODAY!**

Museum Library

Email library@fieldmuseum.org for times and to make an appointment.

1400 South Lake Shore Drive, Chicago, Illinois
60605.2496 / PH.312.922.9410
TTY 312.665.7669

Photos © Field Museum

Visit our unique stores and restaurants

Main Level
Gift Shop
The Field Bistro

Upper Level
SUE Store

Ground Level
Dino Lab Store
Explorer Cafe



The Mummies exhibition was created by the Field Museum.

Major Sponsors: **DISCOVER** **UNITED AIRLINES**

Antarctic Dinosaurs is part of the Griffin Dinosaur Experience, made possible by the generous support of the Kenneth C. Griffin Charitable Fund. The exhibition was developed by the Field Museum, Chicago in partnership with the Natural History Museum of Los Angeles County, Discovery Place - Charlotte, NC, and the Natural History Museum of Utah.

The Field Museum salutes the people of Chicago for their long-standing, generous support of the Museum through the Chicago Park District.

Printed on recycled paper.

